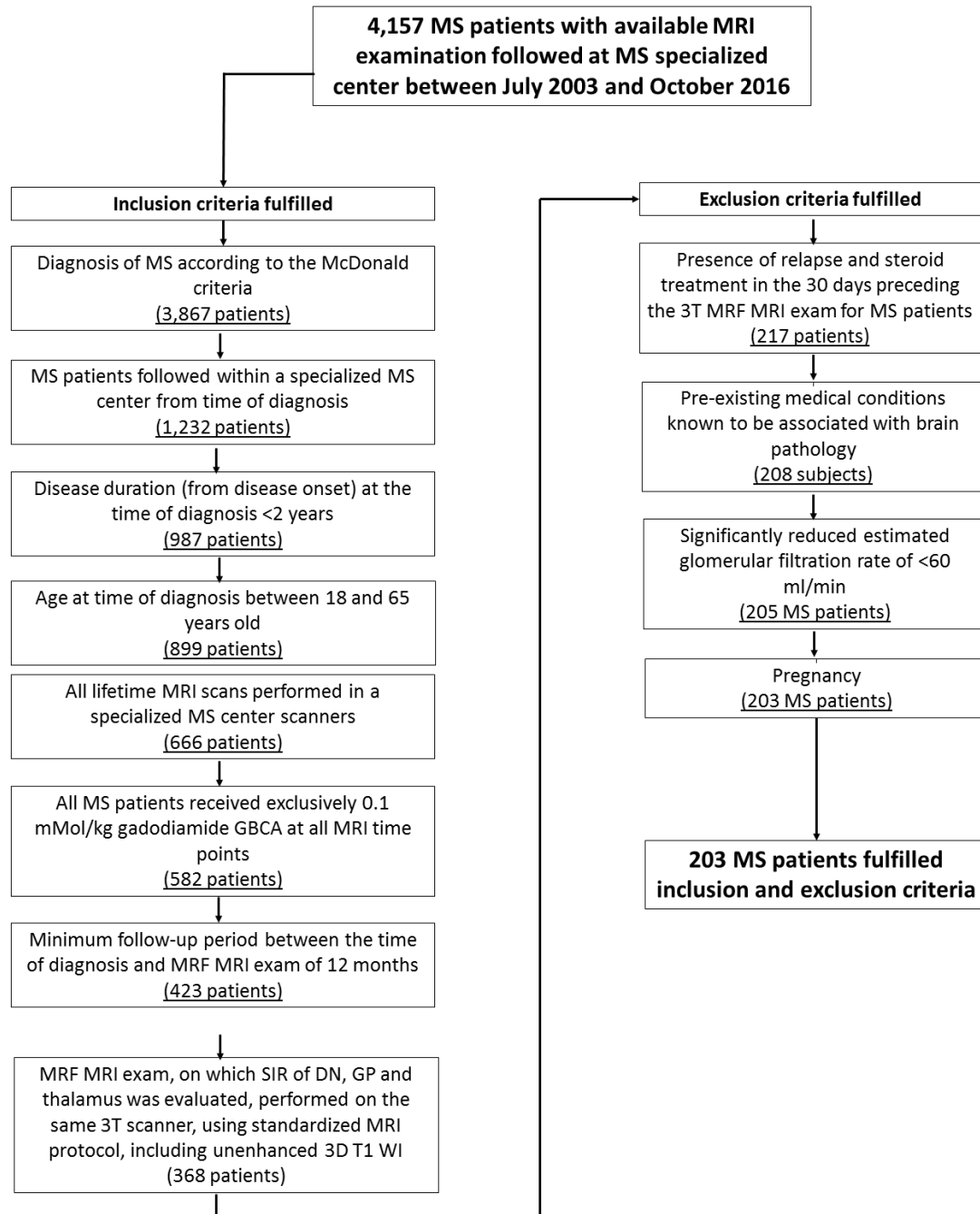


Supplement Figure 1. Flow chart of inclusion and exclusion criteria for multiple sclerosis patients.



Legend: MS-multiple sclerosis; GBCA-gadolinium based contrast agent; MRF-most recent follow-up; SIR-signal intensity ratio; DN-dentate nucleus; GP-globus pallidus; WI-weighted imaging.